

PROJECT TITLE:

Пътен участък 1

Приземна средноденонощна концентрация на серни оксиди (SO<sub>x</sub>)  
Директива (ЕС) 2024/2881

COMMENTS:

R1 - 0.039 µg/m<sup>3</sup>  
L1 - 0.041 µg/m<sup>3</sup>  
R2 - 0.028 µg/m<sup>3</sup>  
L2 - 0.033 µg/m<sup>3</sup>  
R3 - 0.031 µg/m<sup>3</sup>  
L3 - 0.024 µg/m<sup>3</sup>

SOURCES:

8

RECEPTORS:

447

OUTPUT TYPE:

Concentration 95th percentile

MAX:

0.233 µg/m<sup>3</sup>

COMPANY NAME:



LEGEND:

Tunnel  
Road

DATE:

03/14/2026

SCALE:

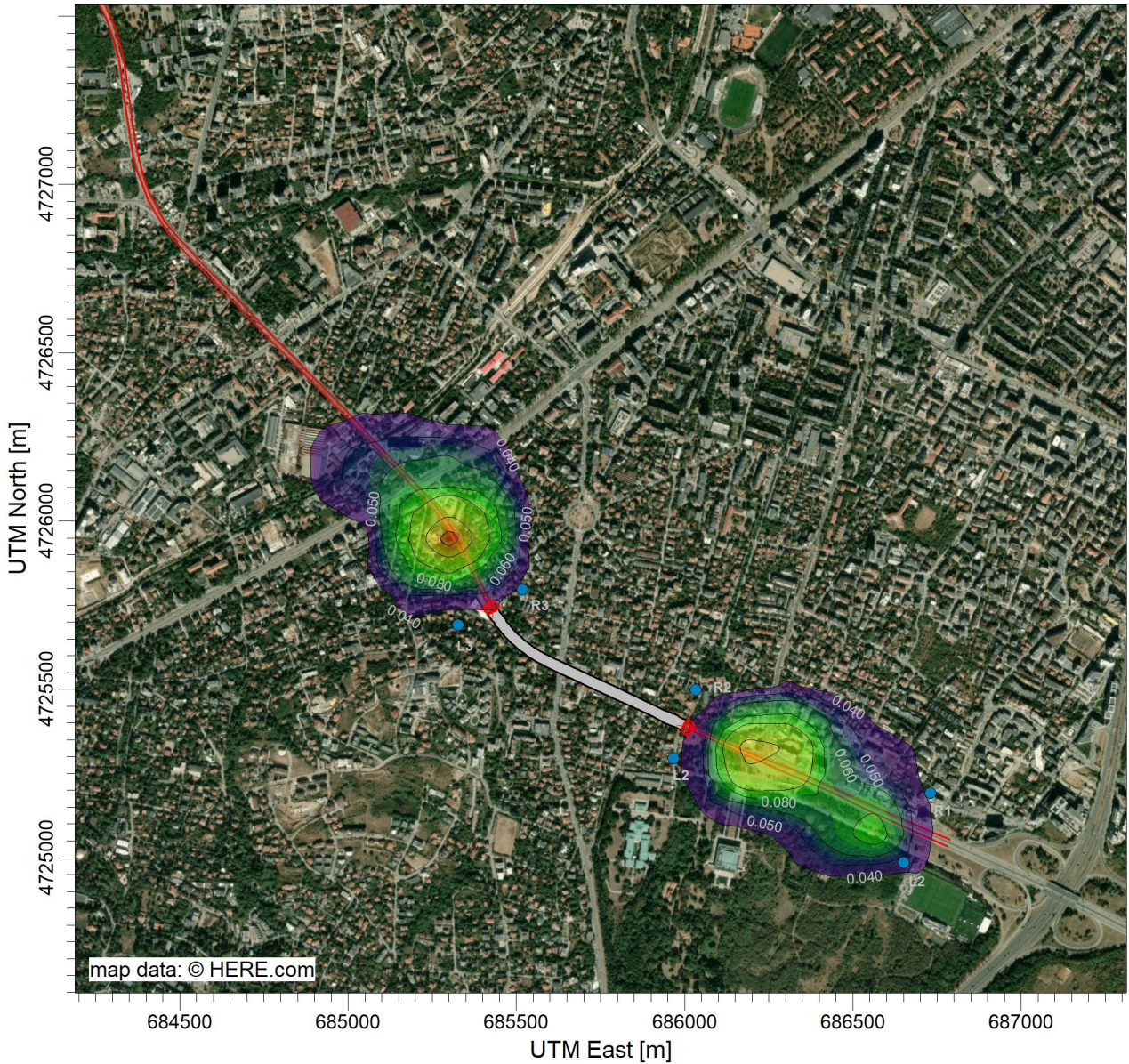
1:20,000

0

0.5 km

PROJECT NO.:

SOP\_Air/EIA\_2026



µg/m<sup>3</sup>

0.233

0.200

0.150

0.100

0.080

0.060

0.050

0.040

Max: 0.233 [µg/m<sup>3</sup>] at (686236.14, 4725304.10)